

ALGORISM 2.0

Tech Rider

For televisions & audio questions please contact Mario Robles:

mario.robles87@gmail.com

tel: 0041 76 415 27 69

For light questions please contact Fabio Coviello:

fcoviello@gmail.com

tel: 0041 79 695 52 25

Provided by the venue:

Stage:

- Büttec (200 x 100 x 9 cm) tourdeck on the stage or near the stage; we'll need to place lots of gear (analog video synthesizer, laptop, small screens etc.).
There's also one scene where the performer is climbing the table.
- Options for hanging the heart-shaped interactive object and tying the ropes (hooks, pipes, mounts) – please see the Appendix for pictures.
- Additional space for light technicians.

Audio:

RME 802 Line Stereo Out or similar audio interface.

CRT televisions:

Suggested quantity of CRT televisions for creating the necessary atmosphere is 6-10 televisions on stage, with the minimum number of 4 for smaller stages.

Please let us know if you can provide professional CRTs, such as Sony Trinitron PVM 2130QM or similar.

These models suit very well because they are stackable. Cheap CRT Televisions tend to provide bad images and are harder to connect and operate. We are, however, ready for negotiations.

All CRT Televisions will be connected with composite cables and are very sensitive. Please bear in mind that in order to build the stage we would need a minimum of three hours. If there are other performances, it is important to contact Mario because once the televisions are installed they should not be moved too much unless there are very stable furniture movers or a similar solution.

Alternative solutions:

Hi-resolution beamer or big LED-displays, in this case the video art will be pre-rendered, not live.
Beamer can be combined with 1 or 2 CRT televisions.

Lights:

Programmable DMX LED lights:

Spotlights (2-8) with strobe mode, daisy-chained

If available: uplights, smoke machine

We have a pre-programmed light script, operated from an iPad wirelessly.

Alternatively, we'd need a light technician with their own DMX controller.

*Additional rider***Backstage:**

Mirror

Warm changing room

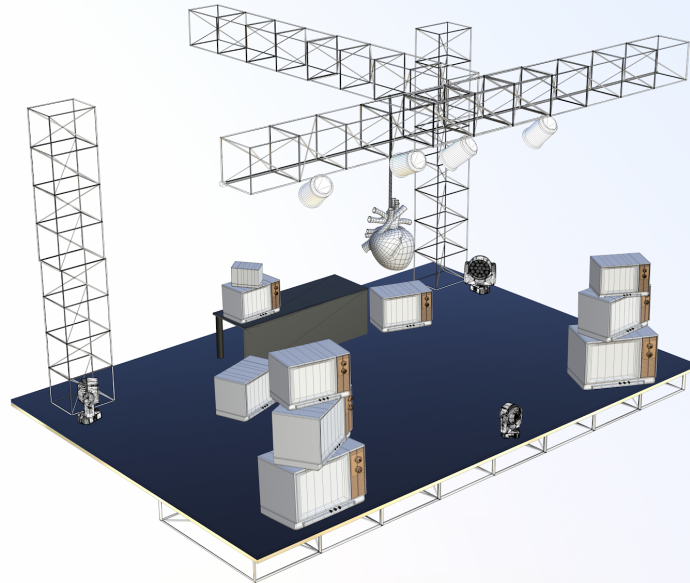
Water / tea

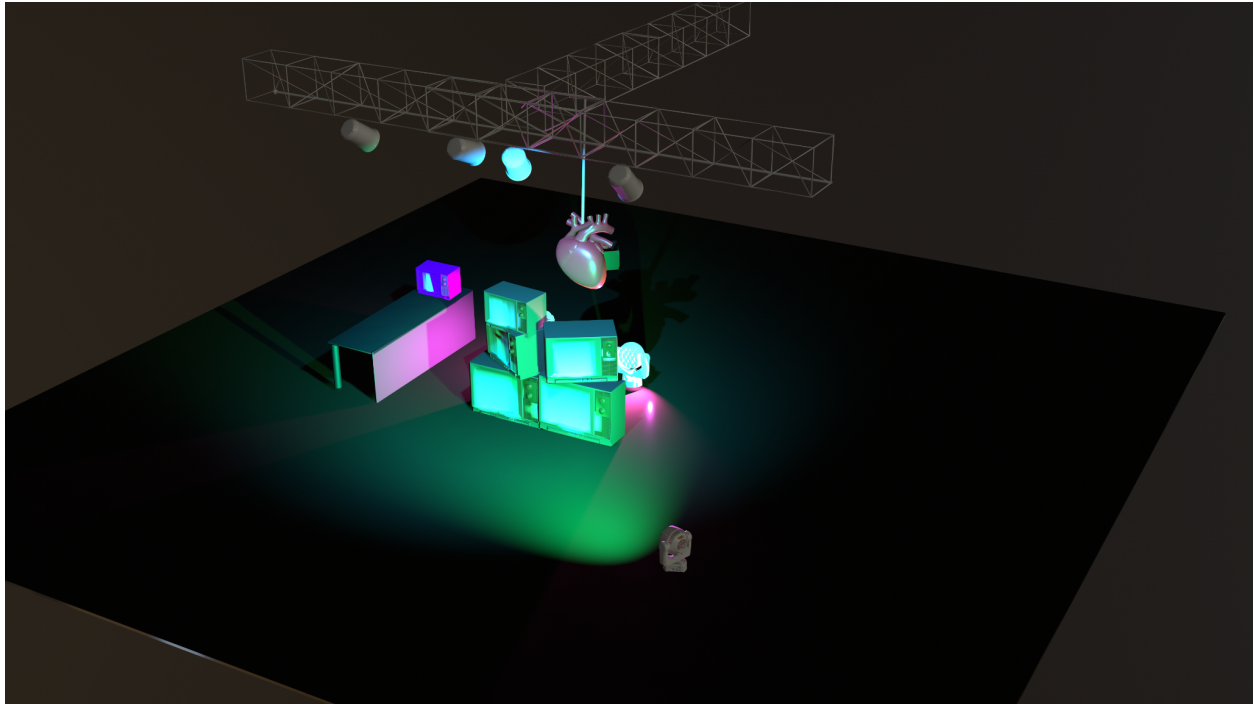
Snacks (vegan)

Wi-Fi

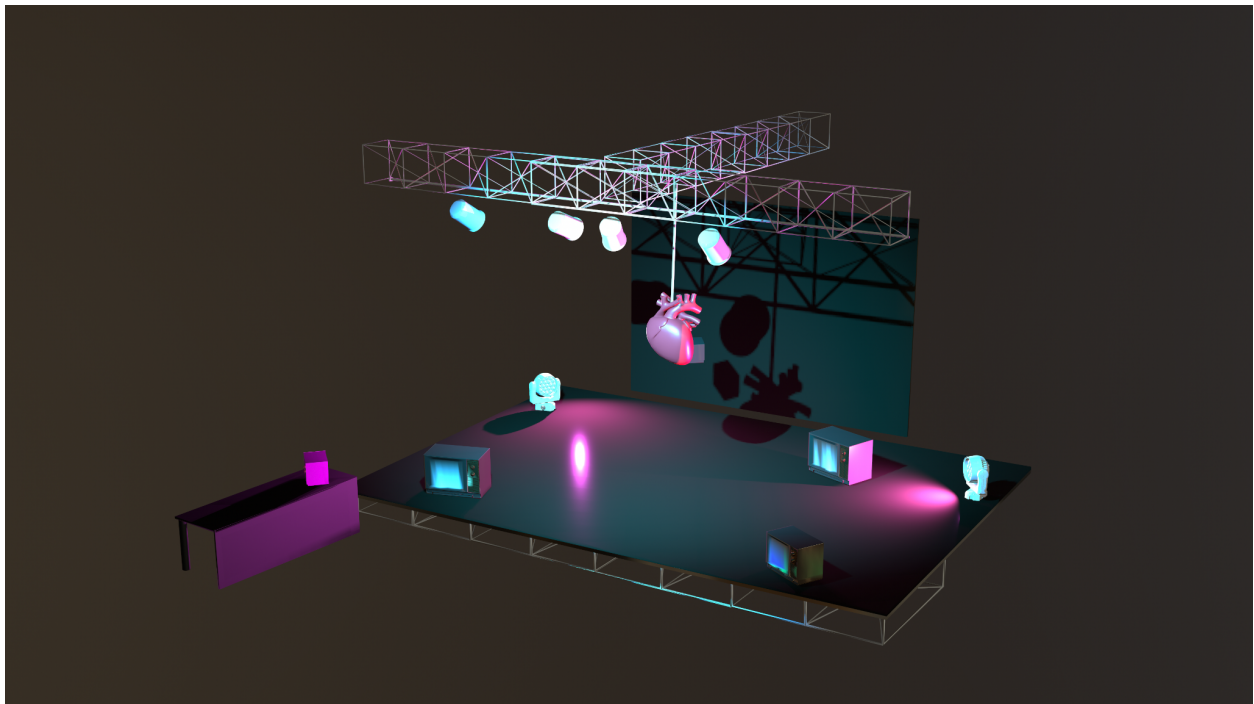
Appendix: Pictures

(Stage design may vary, pictures for demonstration purpose)





Without stage / Immersion



With beamer & Screen